

# GENERAL SURGERY



**Leaque Ahmed, MD**  
Chairman



**Hector DePaz, MD**  
Program Director



**Paritosh Suman, MD**  
Associate Program Director



**Anna Trzpis**  
Program Coordinator  
Ext. 7602/3992



**Yoon Dosuk, MD**  
(347) 551-9913



**Dondre Irving, DO**  
(347) 551-8806



**Elrabie Sameh, MD**  
(347) 551-7404

# GENERAL SURGERY

PGY 4



**Miriam Halimi, DO**  
(347) 551-6905



**Mina Iskaros, MD**  
(347) 724-7182



**Emi Manuia, MD**  
(917) 244-0015



**Oyinem Odumah, MD**  
(347) 724-9656

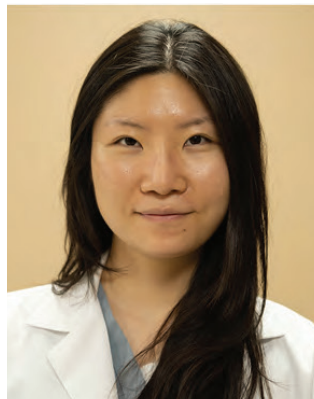
PGY 3



**Khuram Khan, MD**  
(347) 239-0963



**Nawal Khan, MD**  
(917) 204-4847



**Minjae Kim, MD**  
(917) 204-5051



**Maria De La Torre, MD**  
(917) 204-5008

PGY 2



**Fatemeh Adiliaghdam, MD**  
(917) 302-1816



**Jenna Capobianco, MD**  
(646) 251-7554



**Kofi A. Appiafa Obeng, MD**  
(646) 229-1705

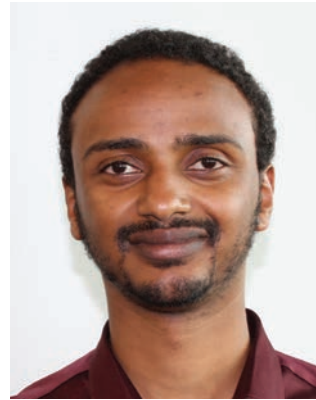


**Jessica Pagé, MD**  
(646) 200-2917

# GENERAL SURGERY



**Nishchal Bogati, MD**  
(917) 326-0945



**Kaleab Debebe, MD**  
(917) 345-1728



**Oscar Rios Herrera, MD**  
(917) 246-2582



**Rollin Johnson, MD**  
(917) 254-5284



**Antonio Melhem, MD**  
(917) 348-3299



# GENERAL SURGERY PRIVILEGES

**FOR THE MOST ACCURATE INFORMATION REGARDING A SPECIFIC RESIDENT'S PRIVILEGES, PLEASE CONTACT THE DEPARTMENT.**

**WYCKOFF HEIGHTS MEDICAL CENTER  
DEPARTMENT OF SURGERY  
DELINEATION OF SURGICAL PRIVILEGES FOR  
POST GRADUATE TRAINEES**

**Clinical Privileges Delineation Form – OGME 1 through OGME 2 Year**

Resident Levels 1-2 are permitted to perform medical histories and physical examinations and to record such in patient charts. Formulations regarding diagnosis, treatment plans, progress notes and doctor's orders may be recorded in patient charts. All are performed under the general supervision of attending surgeon.

As per the hospital's supervision policy, attending physicians must directly supervise the critical portions of surgical, endoscopic, interventional, and other invasive procedures requiring general anesthesia or an operating room setting.

## **NON-OPERATIVE**

The treatments/ procedures are provided under the Attending surgeon's overall direction and control but the Attending surgeon's presence is not required during the performance of the procedure/treatment.

Surgical residents in their first year of training are permitted to perform invasive procedures under direct visual supervision by a member of senior housestaff (OGME 3-5) or an attending surgeon until they have completed the requirements mandated for each procedure. These requirements may include simulation and didactic training as well as direct supervision of a defined number of appropriately performed procedures. When the mandated requirements have been met for each procedure, the PGY1 may perform those procedures with indirect supervision with direct supervision immediately available.

*PGY1s must be certified to perform the procedure under indirect supervision with direct supervision immediately available ONLY after performing the number of the particular procedure in parenthesis. Prior to being certified the PGY1 must perform the procedure under visual supervision of a PGY-3 or higher.*

Venipuncture(1)	Chest Tube Placement(5)
Foley catheter placement(1)	Nasogastric Tube insertion (1)
Lumbar puncture(1)	Incision and Drainage of subcutaneous Abscess(3)
Intraosseous Line Placement(1)	Thoracentesis(1)
Paracentesis(2)	Central Line Placement(5)
Anoscopy(3)	Peripheral Line Placement(2)
Arterial Puncture(2)	Vent management (2)
Arterial Line Placement(3)	Venous cutdown(3)
PICC Line Placement(3)	General Wound Care
Bronchoscopy(5)	

OGME 1-2 residents may perform these procedures under general supervision once they have demonstrated proficiency under direct visual supervision by a member of senior housestaff (OGME 3-5) or an attending surgeon.

## **OPERATIVE**

OGME 1- OGME 2 residents may participate in minor and major procedures in the following categories under the general or direct supervision of the Attending surgeon or of any appropriately privileged OGME 3-5 Resident.

# GENERAL SURGERY PRIVILEGES

WYCKOFF HEIGHTS MEDICAL CENTER  
DEPARTMENT OF SURGERY  
DELINEATION OF SURGICAL PRIVILEGES FOR  
POST GRADUATE TRAINEES

Clinical Privileges Delineation Form – OGME 3 Year and above

Resident Levels 3 and above are permitted to perform medical histories and physical examinations and to record such in patient charts. Formulations regarding diagnosis, treatment plans, progress notes and doctor's orders may be recorded in patient charts. All are performed under the general supervision of attending surgeon. .

**(1) General Supervision**

**The treatment/procedure is provided under the Attending Surgeon's overall direction and control but the Attending Surgeon's presence is not required during the performance of the procedure/treatment.**

IN THE FOURTH YEAR OF TRAINING AND ABOVE, RESIDENTS ARE PERMITTED TO PERFORM PROCEDURES FOR WHICH FIRST, SECOND AND THIRD YEAR TRAINEES ARE CERTIFIED.

**(2) Visual Supervision**

**OGME-1 – OGME-2 may participate in minor and major procedures under the supervision of the Attending Surgeon and when the direct visual supervision of an appropriately privileged OGME -4 -5 resident.**

- All other major procedures of the head and neck, including radial neck dissection, total thyroidectomy, parathyroidectomy, parotidectomy and procedures of similar magnitude
- EGD
- Esophageal surgery, including both abdominal and thoracic approach
- Hiatus hernia repair
- All vascular reconstruction
- Surgery of retroperitoneal tissues including lymph node dissection
- Endotracheal tube- cleared by Anesthesia
- All major surgery involving opening the chest or mediastinum including surgery of the lung, esophagus, mediastinum, and diaphragm, excluding repair of non-traumatic cardiac disease; use of heart/lung machine
- All major abdominal surgery including hepatic resections, pancreatic resections, abdomino-perineal resections and other procedures of similar magnitude.